

# Fred.

ESTATE AGENTS



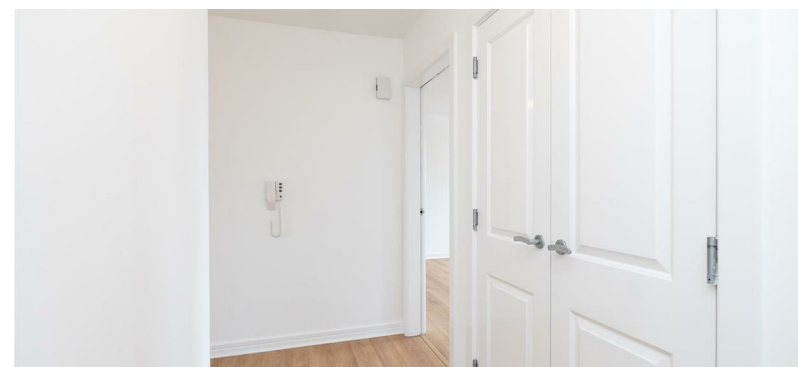
**105c John Muir Way**

Motherwell

**Offers over £94,995**





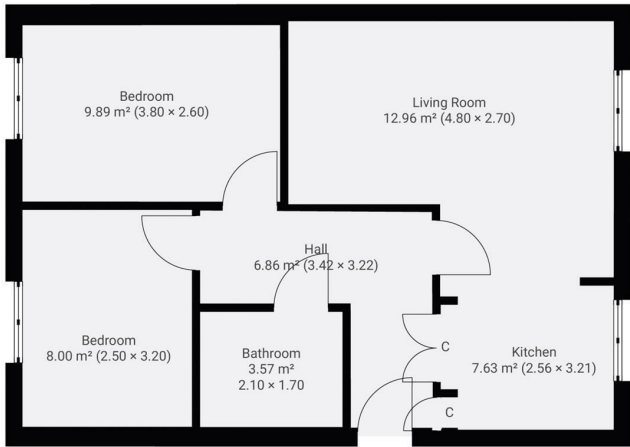




Situated within a modern development within the town of Motherwell and occupying the first floor position, is this spacious and beautifully appointed two double bedroom executive apartment.

On arrival, you will find private parking facilities for the residents and well maintained communal grounds. The property is bright and airy throughout and has been finished to a very high standard. The apartment comprises of a generously sized hallway which provides ample storage space, an incredibly spacious open plan lounge/kitchen area, a stylish family bathroom finished with quality wall tiling and two double bedrooms, of which the master provides fitted wardrobes.

Motherwell offers a great selection of shops, bars, restaurants and leisure facilities. It is perfectly located for the commuter, with the M74 & M8 providing convenient access to the central belt. The town offers excellent public transport, with train and bus services providing links to the surrounding areas.



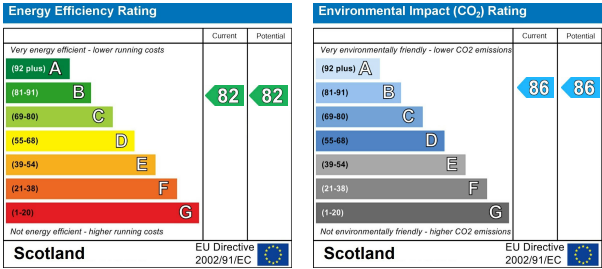
This floor plan is for guidance only and is not drawn to scale.  
Please check all dimensions and shapes before making any decision on measurements.  
LV Productions. Lvenditti@hotmail.com

## Viewing

Please contact us on 01698 305618 if you wish to arrange a viewing appointment for this property or require further information.

These particulars, whilst believed to be accurate are set out as a general outline only for guidance and do not constitute any part of an offer or contract. Intending purchasers should not rely on them as statements of representation of fact, but must satisfy themselves by inspection or otherwise as to their accuracy. No person in this firms employment has the authority to make or give any representation or warranty in respect of the property.

## Energy Efficiency Graph



438 Brandon Street, Motherwell, North Lanarkshire, ML1 1XA  
01698 305618 | info@fredestateagents.co.uk